

# NS MAGNETIC DRUM BRAKE

The OHMIC Resistors Type NS Magnetic Drum Brake is a spring applied A.C. brake, compact in design, suitable for continuous duty, and suitable for connection to any A.C. supply up to 500 Volts 25 to 60 Hz.

The brake is manufactured in three sizes to suit 102, 140 and 178mm brake drum diameter and provides a torque of up to 13.5, 34 and 68 N-m respectively.

## Features

- \* Long life construction
- \* Spring applied - electrically released.
- \* 180° of braking surface.
- \* Woven linings bonded to maleable cast iron brake shoes.
- \* The braking torque is controlled by a compression spring and remains constant for each re-setting for wear.
- \* Two simple adjustments only ... shoe clearance and lining wear.
- \* Suitable for frequent operation - 400 operations per hour.

## Application

OHMIC Resistors Type NS Magnetic Drum Brakes can be used on machine tools, conveyors, roller doors, long travel and cross traverse of cranes and similar applications where a dependable brake is required.

In the majority of applications, the brake is fitted to an extended shaft of the motor. Where this mounting is not possible, the brake may be applied to an immediate shaft of the transmission system.



## Construction

Except for the shoes which are cast iron, the brake is fabricated from mild steel sections with all component parts treated for prevention against rust and corrosion. The proven operating solenoid has a robust sheet metal cover to give protection in service.

Large area brake shoes with bonded linings provide effective braking force against a substantial cast brake drum.

As its actuating medium, the brake uses a solenoid which has been specifically designed by OHMIC Resistors for heavy duty continuous operation in industrial environments.

## Specifications

Brake Type	NS4	NS5.5	NS7
Torque Nm	13.5	34	68
Coil Consumption - VA closed	100	130	200
Weight Brake Kg	8.25	13.85	18.4
Drum Kg	2.0	4.2	8.6

SUPPLY : Up to 500 Volts A.C.

FREQUENCY : 25 to 60 Hz.

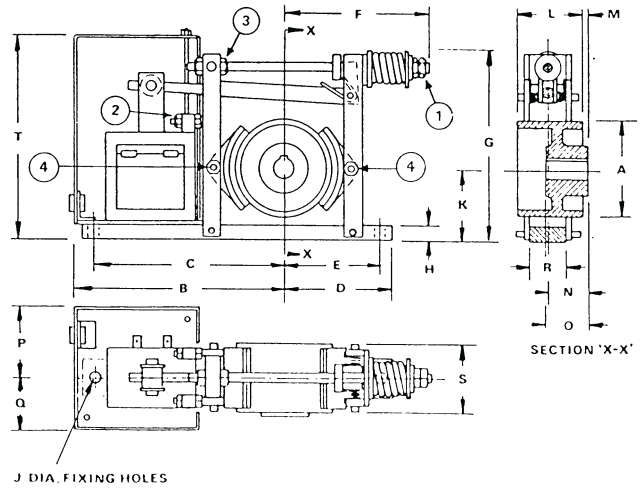
DUTY : Continuous - 400 operations per hour.

*Dimensions*

Drum shown is an optional extra and is supplied faced only.

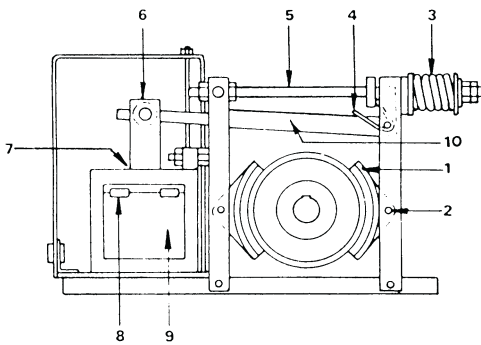
If the brake is mounted vertically, the solenoid should be beneath the Brake Drum.

DRUM DIA.	102	140	178
MAX. BORE	29	38	51



BRAKE TYPE	DIMENSIONS (mm)																			
	A	B	C	D	E	F	G	H	J	K	L	M	N	O	P	Q	R	S	T	
NS 4	102	225	203	108	95	165	197	16	10	73	70	6	41	41	68	49	38	76	194	
NS 5.5	140	260	235	137	121	222	244	25	11	102	83	10	51	51	76	54	51	89	241	
NS 7	178	279	254	156	140	235	295	25	14	127	108	-	54	76	83	60	64	105	295	

*Spare Parts*



No.	Description	Qty	NS TYPE		
			4	5.5	7
1	Brake shoe & lining Assy	2	4142008	4142108	4142208
2	Shoe Stud	2	4147012	4147112	4147206
3	Torque Spring	1	4147020	4147123	4147223
4	Torsion Spring	1	4147022	4147122	4147222
5	Pull Rod Assembly	1	4142004	4142116	4142216
6	Solenoid Plunger	1	4142006	4142106	4142206
7	Plunger Guide	2	4137036	4137036	4137036
8	Coil Retaining Spring	2	4137104	4137104	4137104
9	Solenoid Coil	1	as required		
10	Brake Lever Assy	1	4142010	4142110	4142210

*Installation & Maintenance*

Full instructions are supplied with each brake.

Further copies may be obtained from your nearest OHMIC Resistors sales office. Ask for "Installation and Adjustment Instructions" for Type NS Magnetic Drum Brakes.

*How to Order*

Simply specify brake size and required operating voltage and frequency, eg.,

Type NS5. Magnetic Drum Brake, suitable for use on 515V, 50Hz supply

Information contained in this publication is subject to change without notice